

DEMO

**Instant
Download
After
Purchase**

**100%
Money
Back
Guarantee**

PDF
FILE FORMAT

**90
Days
Free
Updates**

CISCO 200-401

Q&As

2020 Latest EXAMSDUMPS 200-401 PDF Dumps Download. Following Questions and Answers are all new published by Cisco Official Exam Center

- **Latest 200-401 Dumps**
- **200-401 Practice Test**
- **200-401 Study Guide**

**Pass CISCO 200-401 Exam
with 100% Guarantee**

Free Download Real
Questions & Answers
PDF and VCE file from:



200-401

Number: 200-401
Passing Score: 800
Time Limit: 120 min
File Version: 5.0

200-401

Managing Industrial Networks with Cisco Networking

Version 5.0

Sections

1. Install, Replace, and Remove an End Device
2. Install, Replace, and Remove an Industrial Device
3. Install, Replace, and Remove Cables
4. Troubleshooting
5. Maintain Appropriate End Devices and Industrial Network Infrastructure Devices

Exam A

QUESTION 1

Which of the following correctly pairs the dotted decimal subnet mask with the correct number of binary bits that represent the subnet mask?

- A. 255.255.255.192 and /25
- B. 255.255.255.248 and /28
- C. 255.255.255.224 and /26
- D. 255.255.255.248 and /27
- E. 255.255.255.240 and /28
- F. 255.255.255.240 and /16

Correct Answer: E

Section: Install, Replace, and Remove an End Device

Explanation

Explanation/Reference:

QUESTION 2

Exhibit:

```
interface FastEthernet1/1
  switchport access vlan 102
!
interface FastEthernet1/2
  switchport access vlan 104
!
interface FastEthernet1/3
  switchport access vlan 103
!
interface FastEthernet1/4
  switchport access vlan 101
!
interface FastEthernet1/5
  switchport trunk native vlan 103
  switchport mode trunk
!
interface Vlan1
  no ip address
!
interface Vlan101
  ip address 192.168.1.1 255.255.255.0
  ip enable
!
interface Vlan102
  ip address 192.168.2.1 255.255.255.0
  ip enable
!
interface Vlan103
  ip address 192.168.3.1 255.255.255.128
  ip enable
!
interface Vlan104
  ip address 192.168.3.129 255.255.255.128
  ip enable
!
ip classless
```

Refer to the exhibit. Which port should a PLC with IP address 192.168.3.65 be plugged into in order to communicate to the rest of the network?

- A. FastEthernet1/1
- B. FastEthernet1/2
- C. FastEthernet1/3
- D. FastEthernet1/4
- E. FastEthernet1/5

Correct Answer: C
Section: Install, Replace, and Remove an End Device
Explanation

Explanation/Reference:

QUESTION 3

Which option allows an EtherNet/IP I/O device to be safely installed where it is subject to water immersion?

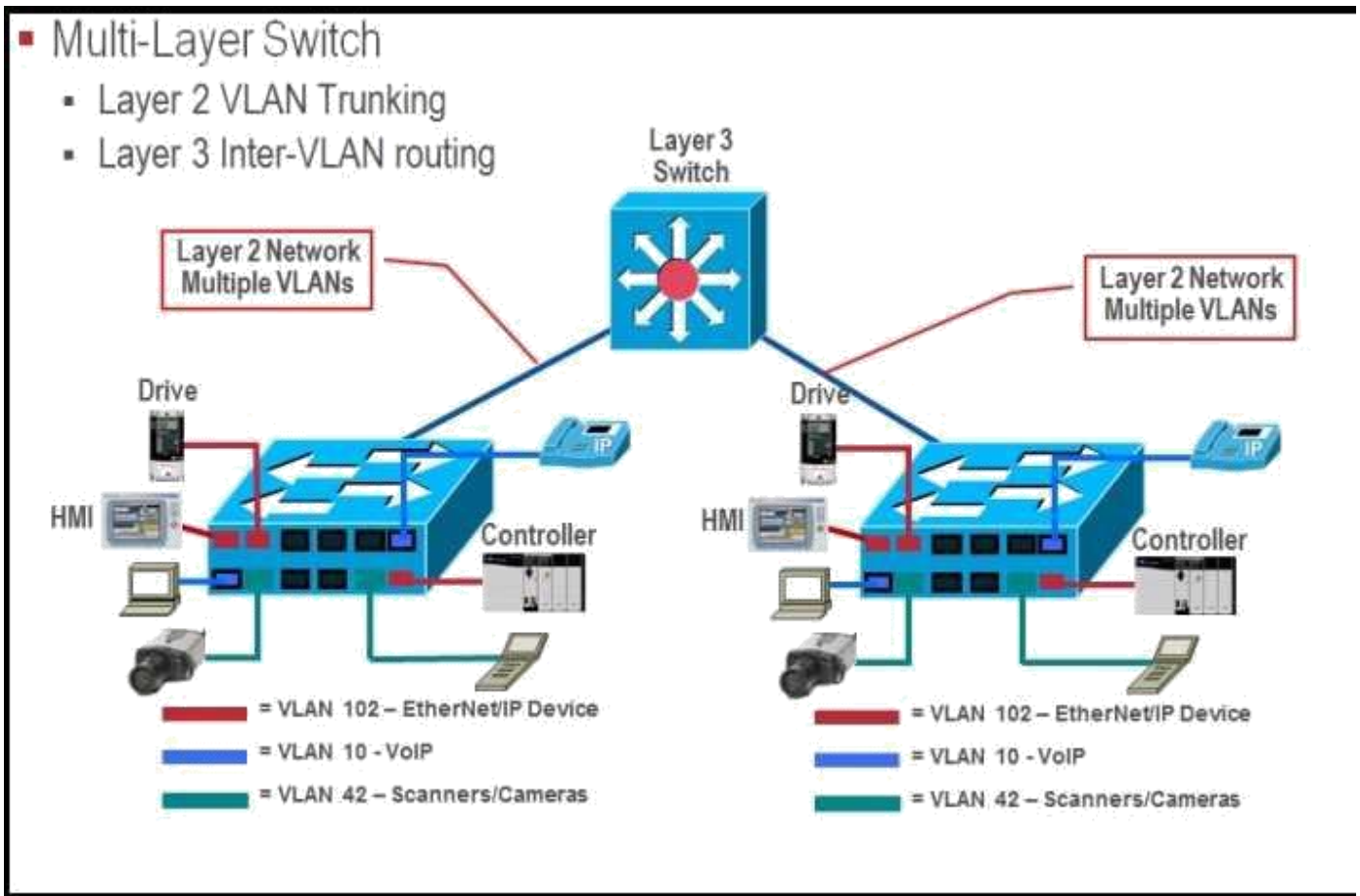
- A. The device is rated IP20 and the power wiring is installed securely to the terminal block.
- B. The device is rated IP67 and a power cordset is used.
- C. The device is rated IP67 and immersed to 10 m.
- D. The device is rated IP20 and immersed to 10 m.

Correct Answer: B
Section: Install, Replace, and Remove an End Device
Explanation

Explanation/Reference:

QUESTION 4

Exhibit:





Refer to the exhibit. What are three traffic and interconnection requirements for the devices in the exhibit? (Choose three.)

- A. The EtherNet/IP drive connections are in a high-voltage area and need protection from electromagnetic noise, so shielded cable that is rated for 600 V is advised.
- B. EtherNet/IP devices such as the controller, drive, VoIP phone, and IP camera should be in the same VLAN.
- C. CIP traffic has the highest bandwidth requirement so it needs the highest QoS setting.
- D. EtherNet/IP drive traffic has high sensitivity to random drops, latency, and jitter.
- E. Real-time motion control and VoIP traffic can share the same VLAN with the proper QoS setting.
- F. IEEE1588 and PTP are important for ensuring real-time synchronization.

Correct Answer: ADF

Section: Install, Replace, and Remove an End Device

Explanation

Explanation/Reference:

QUESTION 5

Exhibit:

Which two statements are correct for a safe wiring installation to the terminal block of the switch or endpoint? (Choose two.)

- A. Insert a green ground wire into the terminal block that is marked RT for return.
- B. Verify that DC power is live and within 24 VDC voltage range before starting wiring.
- C. Verify that the DC power circuit includes an overcurrent protective device that limits the DC current to 5 A.
- D. Because this is a low-voltage DC circuit, anyone can install this wiring without electrical training or qualifications.
- E. Connect the positive 24 VDC conductor to the V terminal and connect the negative 24 VDC return wire to the RT terminal.
- F. A ground wire can optionally be connected to the screw terminal on the front of the switch.

Correct Answer: CE

Section: Install, Replace, and Remove an End Device

Explanation

Explanation/Reference:

QUESTION 6

What are two benefits of a star network topology? (Choose two.)

- A. Disruption of the entire network is not required when adding new machines.
- B. Any problem which leaves the network inoperable can be traced to the central hub.
- C. This network type requires less cable as compared to linear bus topology.

- D. The performance of one of the numerous nodes cannot reflect on the performance of other nodes.
- E. The performance of the entire network is directly dependent on the performance of the hub.

Correct Answer: AB

Section: Install, Replace, and Remove an End Device

Explanation

Explanation/Reference:

